

DANIA ENTERTAINMENT CENTER

CAPITAL IMPROVEMENT PLAN

PHASES: 1.1, 1.2, 1.3, 2.1, 2.2, 2.3, 2.4
3.1, 3.2, 4.0, 4.1, 4.2, 4.3

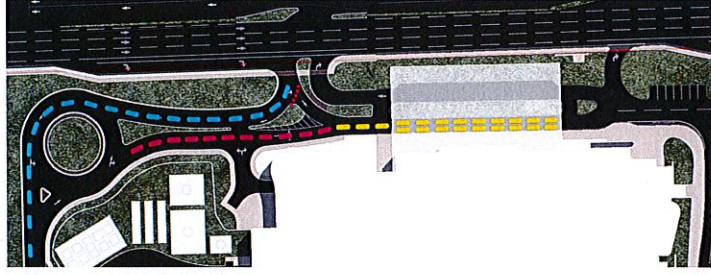
SUBMITTAL DATE: AUGUST 12, 2014

SUBMITTED TO: CITY OF DANIA BEACH, FL

SUBMITTED BY: DANIA ENTERTAINMENT CENTER, LLC.

Dania Entertainm

*NOTE: ALL DIMENSIONS ARE APPROXIMATE - TYP.

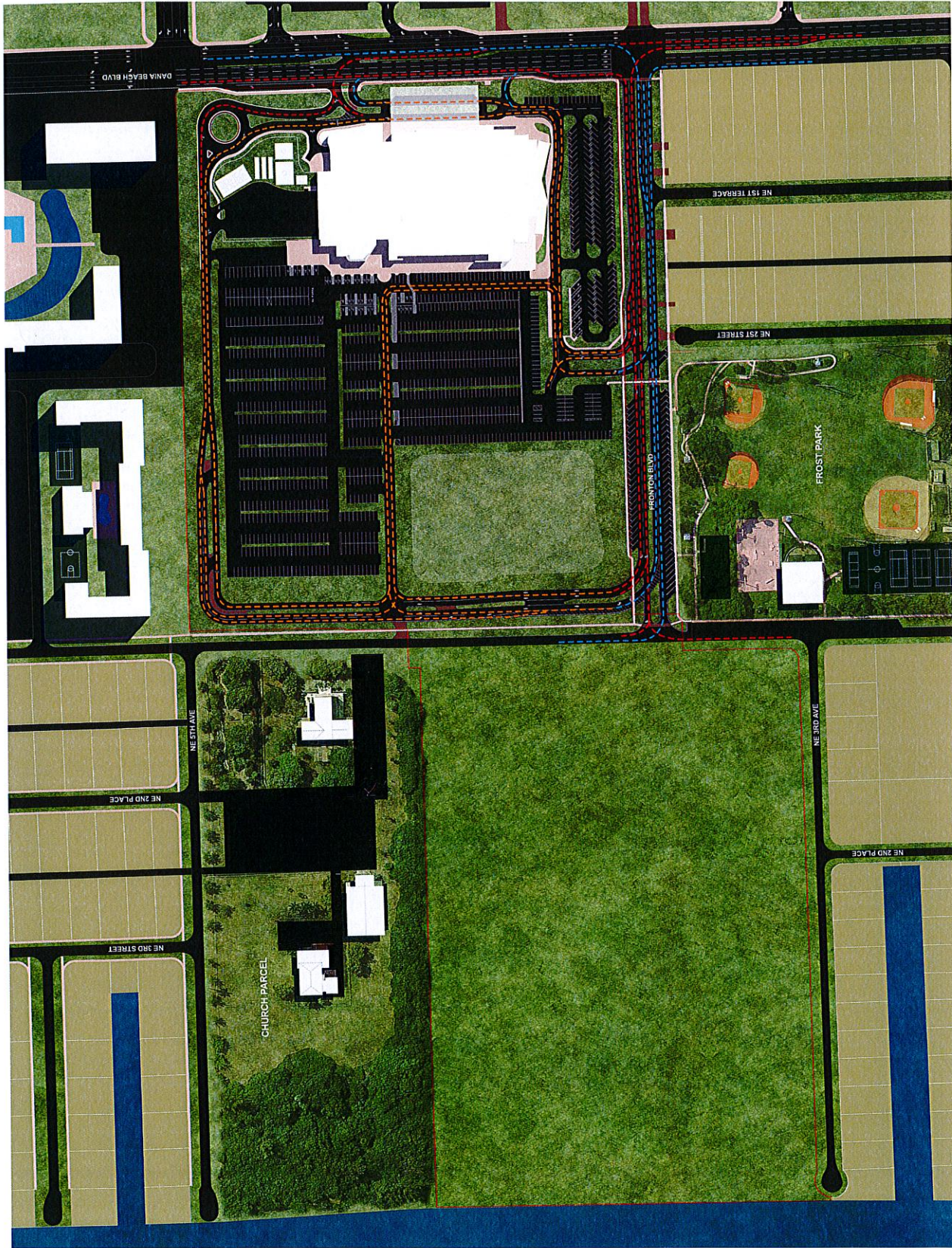


QUEUING STRATEGY DIAGRAM
REGULAR QUEUE
HIGH-DEMAND QUEUE
THROUGH ACCESS

CONCEPTUAL CIRCULATION PLAN
SYMBOLS LEGEND
ACCESS ROUTES
EGRESS ROUTES
INTERNAL ROUTES



CIP/A12



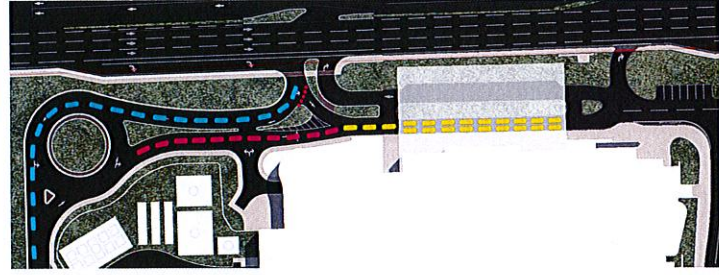
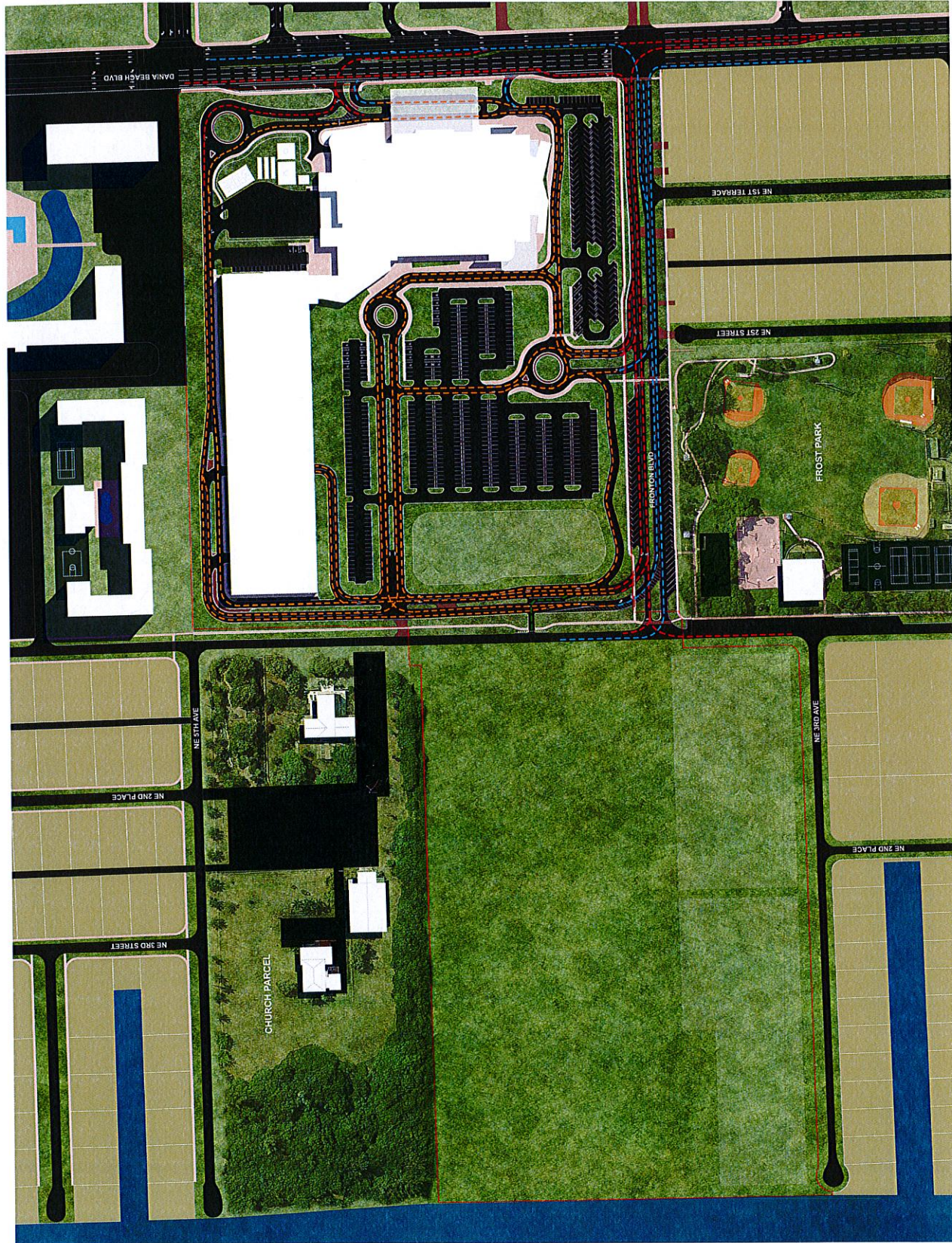
Calvin, Giordano & Associates, Inc.
EXCEPTIONAL SOLUTIONS
10000 W. BIRCHWOOD BLVD. SUITE 200
DAVIE, FL 33314
Phone: 954.937.7791 • Fax: 954.937.2887



Dania Entertainment Center, LLC
DATE: AUG 12, 2014

SITE PLAN - PHASE 1.1 - 1.2

*NOTE: ALL DIMENSIONS ARE APPROXIMATE - TYP.



QUEUING STRATEGY DIAGRAM
 REGULAR QUEUE
 HIGH-DEMAND QUEUE
 THROUGH ACCESS

CONCEPTUAL CIRCULATION PLAN
SYMBOLS LEGEND
 ACCESS ROUTES
 EGRESS ROUTES
 INTERNAL ROUTES



CIP/A13



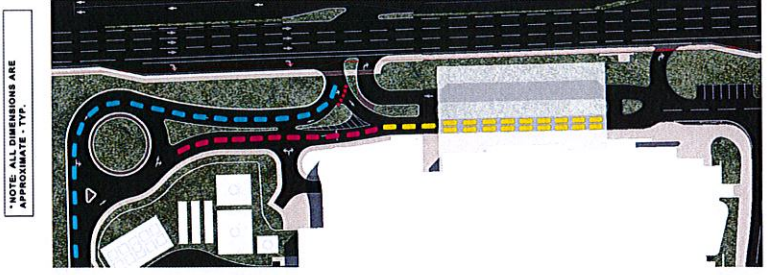
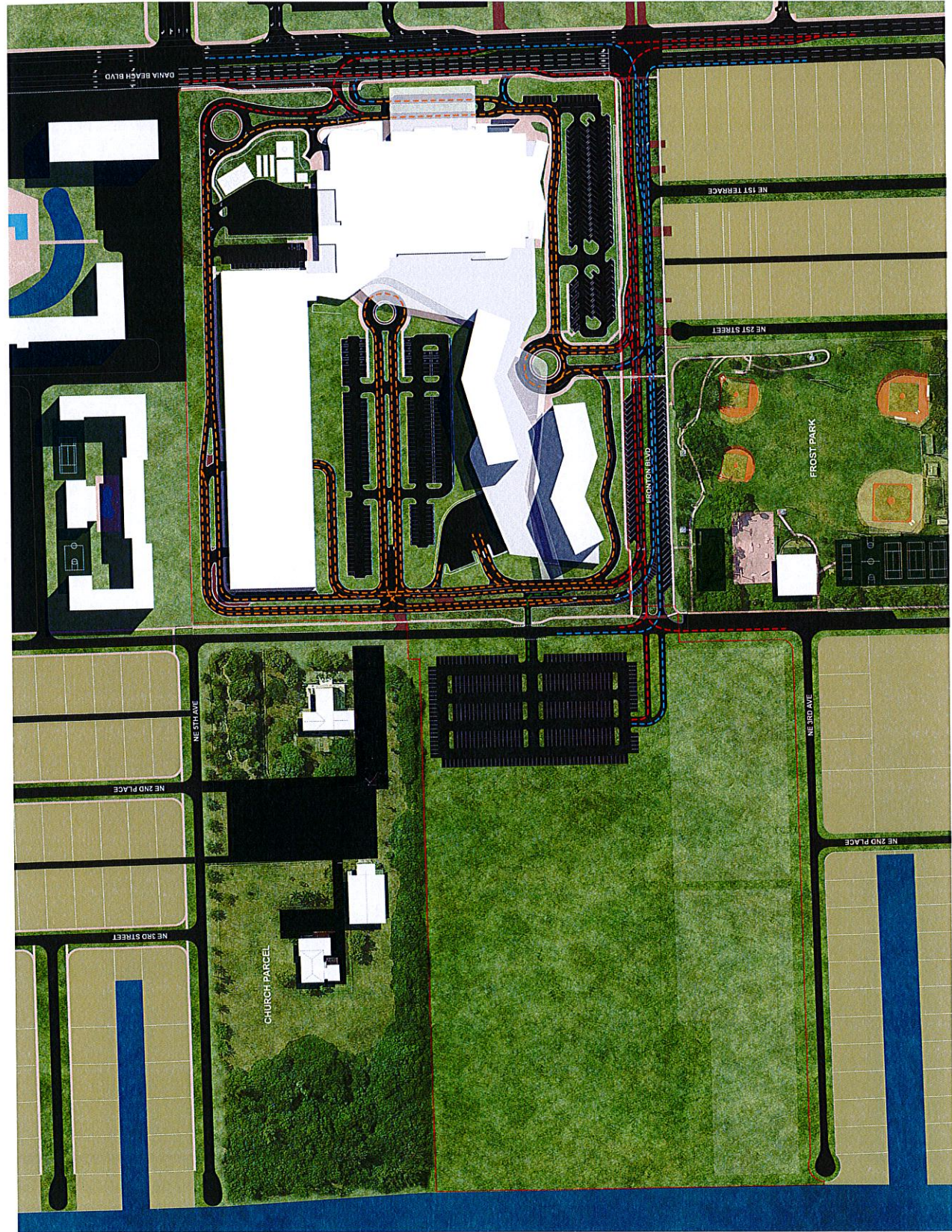
Calvin, Giordano & Associates, Inc.
 ARCHITECTS & PLANNERS
 1500 N. W. 10th St., Suite 100
 Ft. Lauderdale, FL 33304
 Phone: 954.937.7781 • Fax: 954.937.8807



Dania Entertainment Center, LLC

SITE PLAN - PHASE 2.1 - 2.2 - 2.3

DATE: AUG 12, 2014



*NOTE: ALL DIMENSIONS ARE APPROXIMATE - 1"=1'.

QUEUING STRATEGY DIAGRAM
 REGULAR QUEUE
 HIGH-DEMAND QUEUE
 THROUGH ACCESS

CONCEPTUAL CIRCULATION PLAN
SYMBOLS LEGEND
 - - - ACCESS ROUTES
 - - - EGRESS ROUTES
 - - - INTERNAL ROUTES



CIP/A14



Calvin, Giordano & Associates, Inc.
 EXCEPTIONAL SOLUTIONS
 1800 Miller Drive, Suite 600, Fort Lauderdale, Florida 33316
 Phone: (954) 371-1781 • Fax: (954) 371-1888

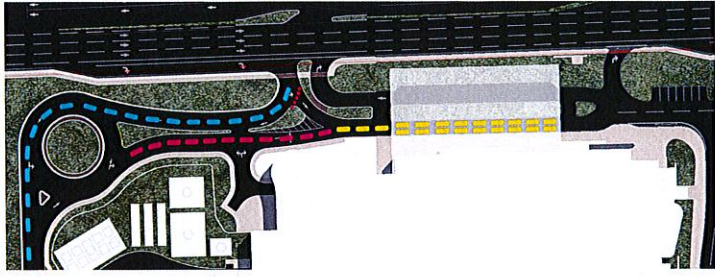


Dania Entertainment Center, LLC

SITE PLAN - PHASE 1.3 - 3.1 - 3.2 - 4.0

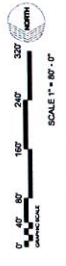
DATE: AUG 12, 2014

*NOTE: ALL DIMENSIONS ARE APPROXIMATE - TYP.



QUEUING STRATEGY DIAGRAM
 REGULAR QUEUE
 HIGH-DEMAND QUEUE
 THROUGH ACCESS

CONCEPTUAL CIRCULATION PLAN
SYMBOLS LEGEND
 ACCESS ROUTES
 EGRESS ROUTES
 INTERNAL ROUTES



CIP/A15

ARCHITECTURE F3.

Calvin, Giordano & Associates, Inc.
 1800 Diner Drive, Suite 200, Fort Lauderdale, Florida 33316
 Phone: 954.937.7271 • Fax: 954.937.8807



Dania Entertainment Center, LLC

SITE PLAN - PHASE 4.1 - 4.2 - 4.3 - 4.0

DATE: AUG 12, 2014

* NOTE: ALL DIMENSIONS ARE APPROXIMATE - 1"=1'.

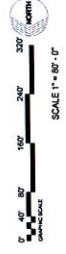
SEE DEVELOPER'S AGREEMENT FOR SPECIFICATIONS ON LANDSCAPING



CONCEPTUAL LANDSCAPE PLAN

SYMBOLS LEGEND

- LARGE CANOPY TREE
- LARGE ACCENT TREE
- SMALL TREE
- PALM



CIP/A16



Calvin, Giordano & Associates, Inc.
 EXCEPTIONAL SOLUTIONS
 1800 E. 17th Ave., Suite 200, Ft. Lauderdale, Florida 33316
 Phone: (754) 771-7171 Fax: (754) 512-2800



Dania Entertainment Center, LLC

SITE PLAN - PHASE 1.1 - 1.2

DATE: AUG 12, 2014

NOTE: ALL DIMENSIONS ARE APPROXIMATE - 1"=1'.

SEE DEVELOPER'S AGREEMENT FOR SPECIFICATIONS ON LANDSCAPING



CONCEPTUAL LANDSCAPE PLAN

SYMBOLS LEGEND

- LARGE CANOPY TREE
- LARGE ACCENT TREE
- SMALL TREE
- PALM



CIP/A17

ARCHITECTURE F3

Calvin, Giordano & Associates, Inc.
 EXCEPTIONAL SOLUTIONS
 1800 S.W. 10th Ave., Suite 1000, Ft. Lauderdale, Florida 33316
 Phone: (954) 337-3791 • Fax: (954) 337-3807



Dania Entertainment Center, LLC

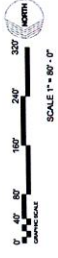
SITE PLAN - PHASE 2.1 - 2.2 - 2.3

DATE: AUG 12, 2014

* NOTE: ALL DIMENSIONS ARE APPROXIMATE - TYP.
SEE DEVELOPER'S AGREEMENT FOR SPECIFICATIONS ON LANDSCAPING



**CONCEPTUAL
LANDSCAPE PLAN**
SYMBOLS LEGEND
●●● LARGE CANOPY TREE
●●● LARGE ACCENT TREE
●●● SMALL TREE
●●● PALM



**ARCHITECTURE
F3**

Calvin, Giordano & Associates, Inc.
EXCEPTIONAL SOLUTIONS
1800 Eller Drive, Suite 600, Fort Lauderdale, Florida 33316
Phone: (954) 371-1781 • Fax: (954) 371-2888

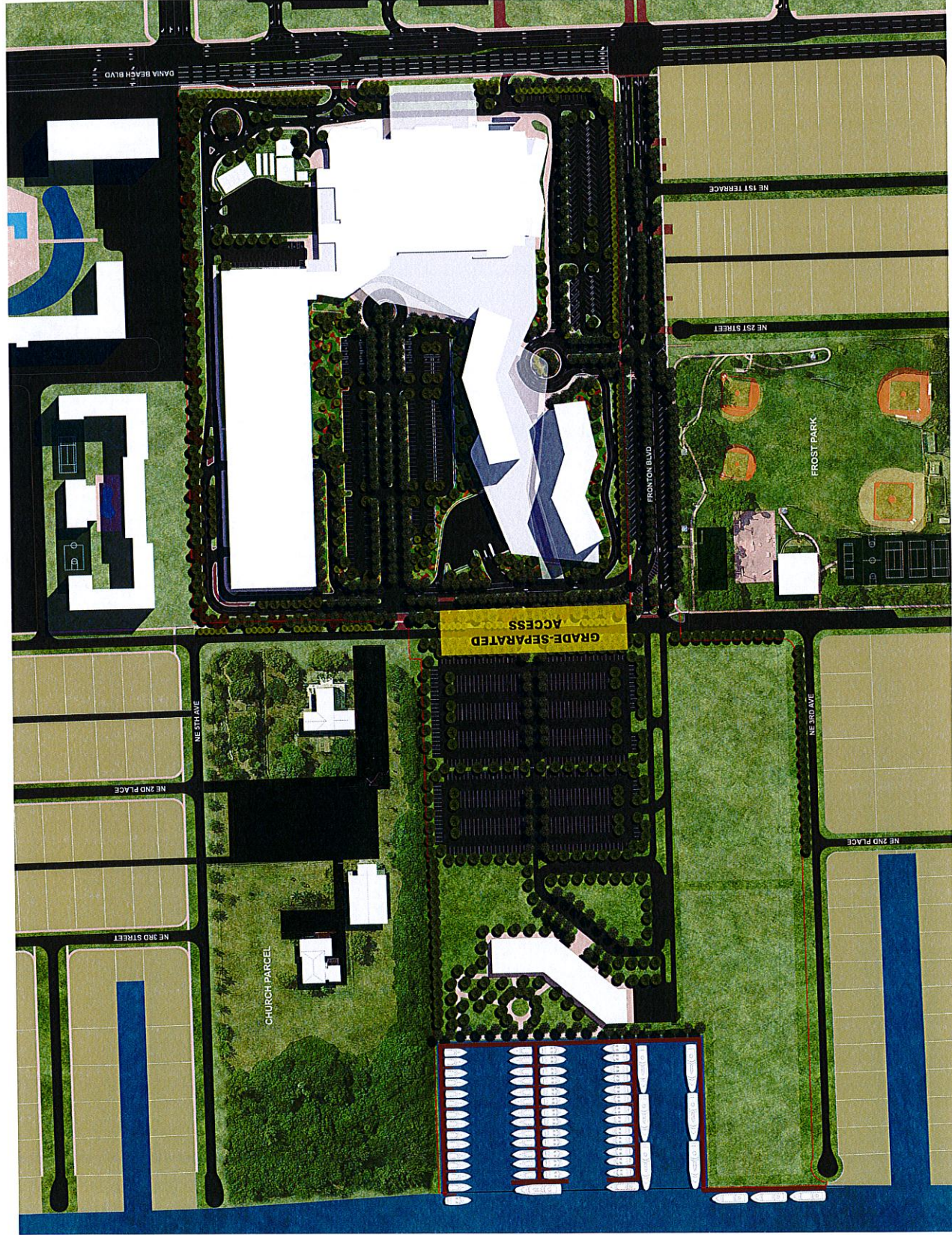


Dania Entertainment Center, LLC
DATE: AUG 12, 2014

SITE PLAN - PHASE 1.3 - 3.1 - 3.2 - 4.0

CIP/A18

*NOTE: ALL DIMENSIONS ARE APPROXIMATE - TYP.
SEE DEVELOPER'S AGREEMENT FOR SPECIFICATIONS ON LANDSCAPING



**CONCEPTUAL
LANDSCAPE PLAN**

SYMBOLS LEGEND

- LARGE CANOPY TREE
- LARGE ACCENT TREE
- SMALL TREE
- PALM



CIP/A19



Calvin, Giordano & Associates, Inc.
EXCEPTIONAL SOLUTIONS
PROJECTS • PLANNING • DESIGN • CONSTRUCTION
Phone: 954.932.7281 • Fax: 954.932.2887

Dania Entertainment Center, LLC

SITE PLAN - PHASE 4.1 - 4.2 - 4.3

DATE: AUG 12, 2014

NOTE: PLANT SIZES SHOWN ARE APPROX. PLANT SIZES AT THE TIME OF PLANTING. SEE DEVELOPER'S AGREEMENT FOR SPECIFICATIONS ON LANDSCAPING

**SMALL TREES
8-10 FEET TALL**



DESERT CASSIA



CREPE MYRTLE



SIMPSON STOPPER



ORANGE GEIGER



SILVER BUTTONWOOD



TAMARIND TREE

**SHADE TREES
10-14 FEET TALL**



LIVE OAK



PINK TRUMPET TREE



MAHOGANY



MAGNOLIA



ROYAL POINCIANA



VERAWOOD

**ACCENT TREES
10-14 FEET TALL**



COCOPLUM



COPPERLEAF



PODOCARPUS

**PALMS
10-18 FEET TALL**



FOXTAIL PALM



BOTTLE PALM



VEITCHIA PALM



PYGMY DATE PALM



PINDO PALM



CABBAGE PALM



ROYAL PALM



DATE PALM



MEDJOO PALM

POTENTIAL PLANT PALETTE

Dania Entertainment Center, LLC

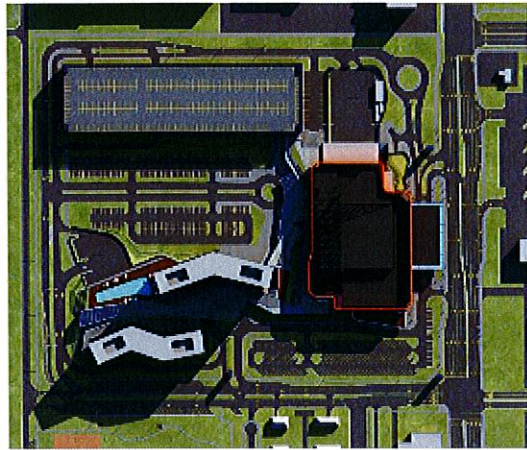
DATE: AUG 12, 2014

Calvin, Giordano & Associates, Inc.
EXCEPTIONAL SOLUTIONS
11000 W. 11th Ave., Suite 100, Fort Lauderdale, FL 33316
Phone: (954) 571-7774 Fax: (954) 571-2807

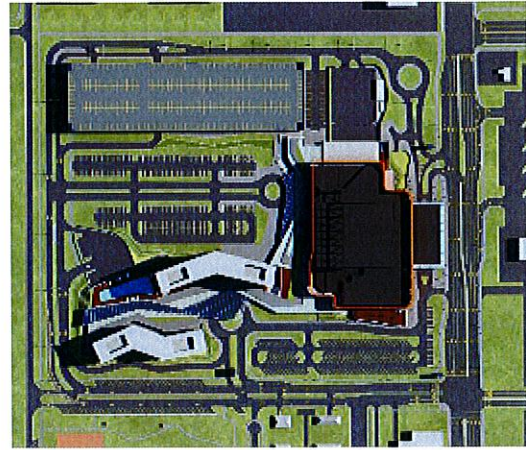


ARCHITECTURE
F3.
TECHNICAL

CIP/A20



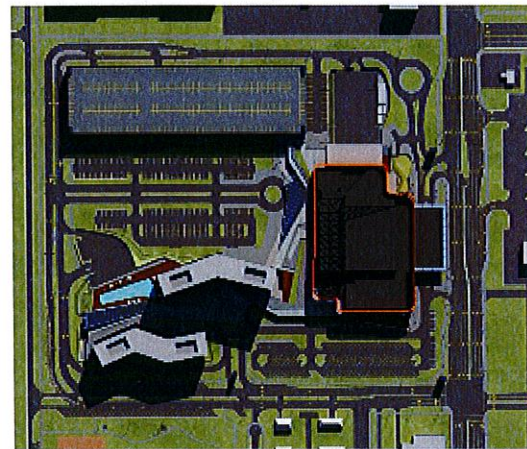
WINTER - 9.00AM



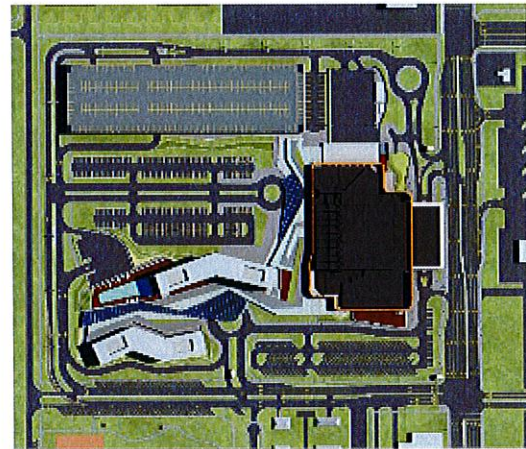
WINTER - 12.00PM



WIN



AUTUMN - 9.00AM



AUTUMN - 12.00PM

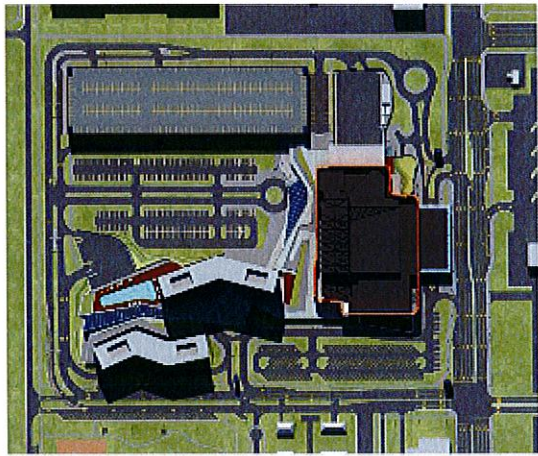


AUT

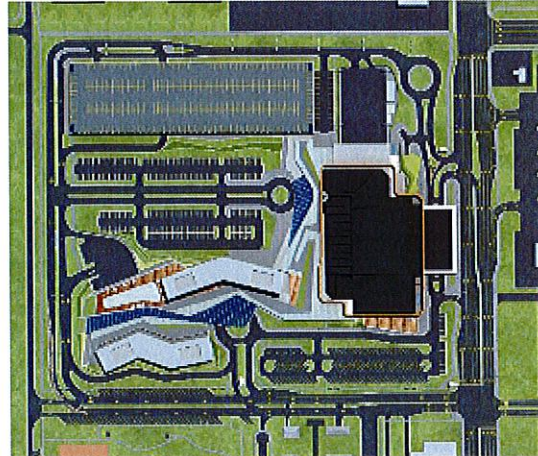
3D RENDERING - Solar Study

Dania Entertainment Center, L

(DATE: 04/14)



SUMMER - 9.00AM



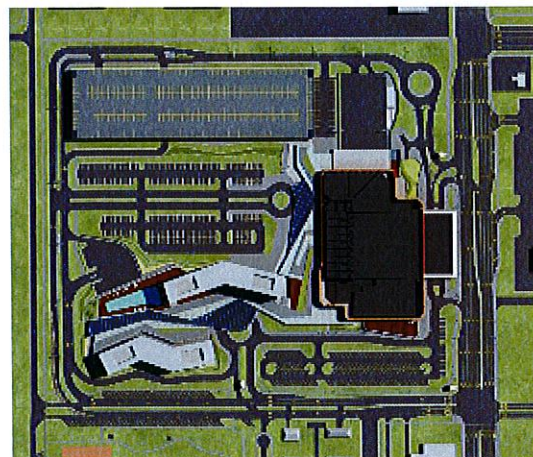
SUMMER - 12.00PM



SU



SPRING - 9.00AM



SPRING - 12.00PM



SP

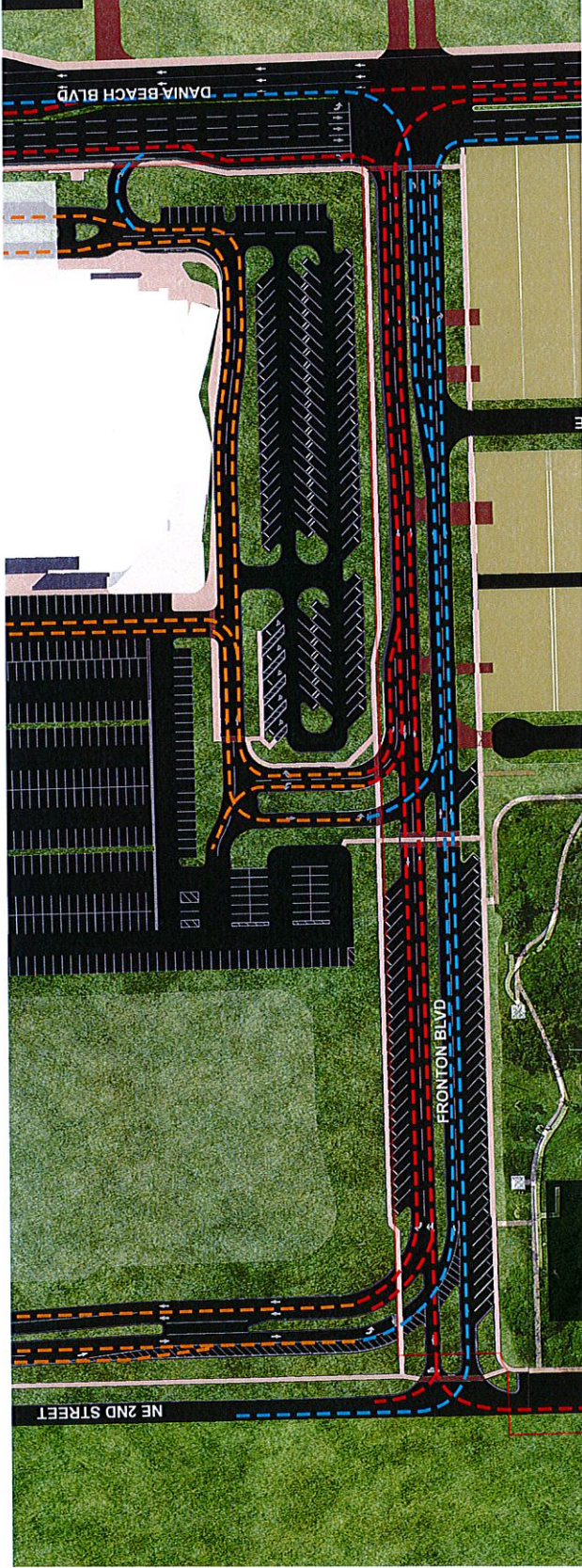
3D RENDERING - Solar Study

Dania Entertainment Center, L

DATE: 01/11/2014

*NOTE: ALL DIMENSIONS ARE APPROXIMATE - TYP.
SEE DEVELOPER'S AGREEMENT FOR SPECIFICATIONS ON LANDSCAPING

CONCEPTUAL CIRCULATION PLAN
SYMBOLS LEGEND
 - - - ACCESS ROUTES
 - - - EGRESS ROUTES
 - - - INTERNAL ROUTES



CONCEPTUAL LANDSCAPE PLAN
SYMBOLS LEGEND
 ● LARGE CANOPY TREE
 ● LARGE ACCENT TREE
 ● SMALL TREE
 ● PALM



Calvin, Giordano & Associates, Inc.
 CIVIL ENGINEERS
 1800 Fair Drive, Suite 600, Fort Lauderdale, Florida 33316
 Phone: 954-937-7771 • Fax: 954-937-8807



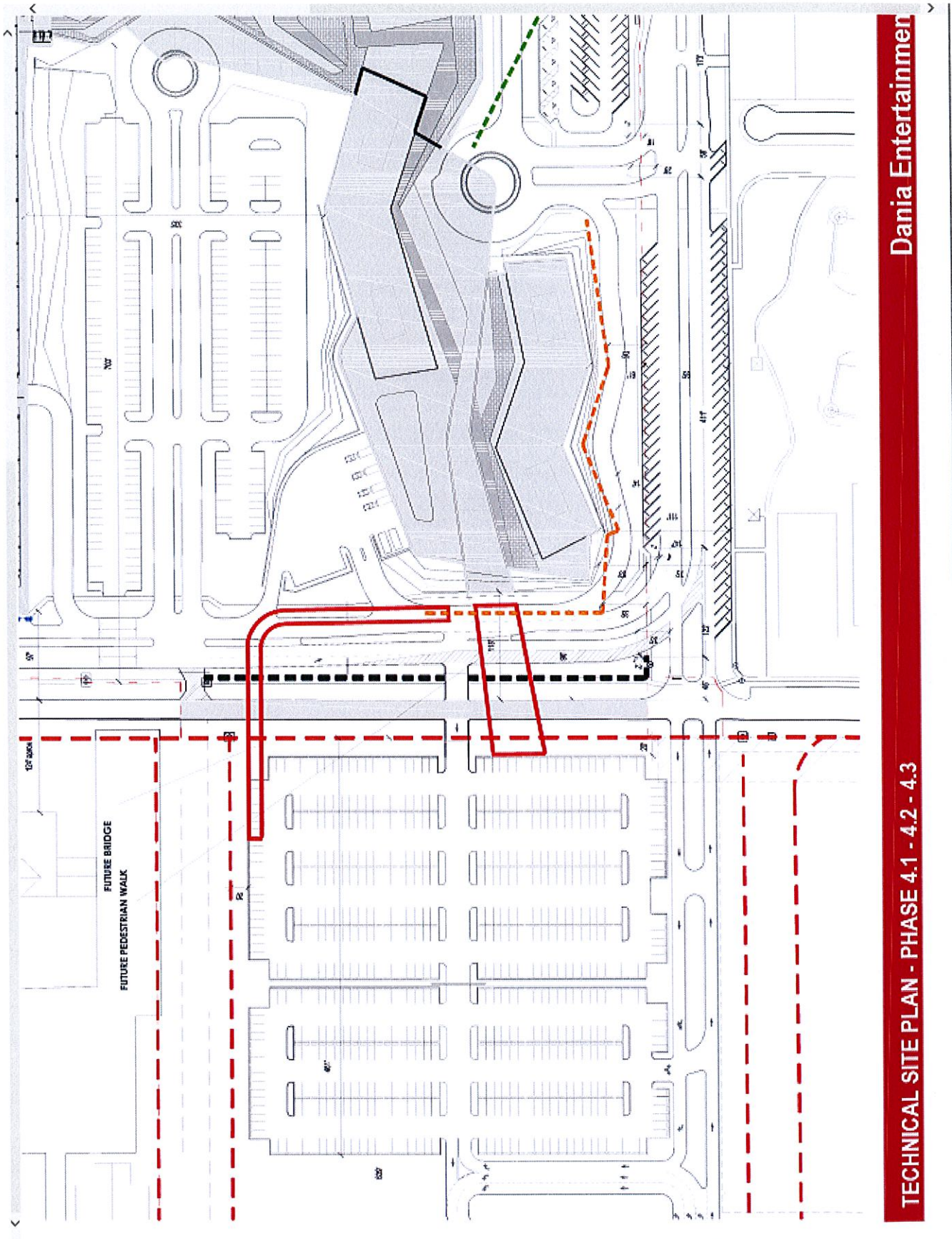
AFCHI
TECH
TURE
F3

Dania Entertainment Center, LLC
 DATE: AUG 12, 2014

FRONTON BOULEVARD - PHASE 1.1 - 1.2

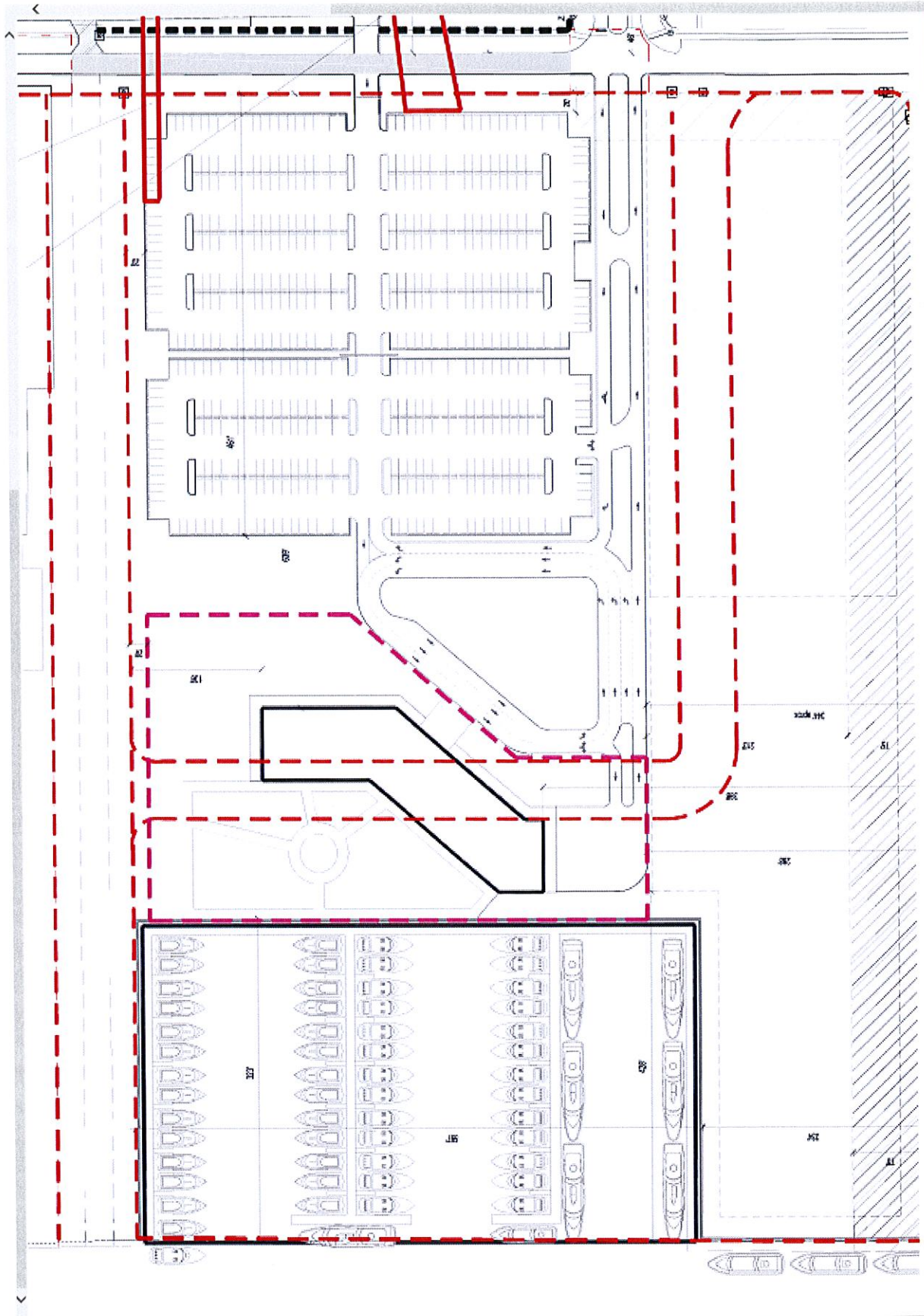
CIP/A23





TECHNICAL SITE PLAN - PHASE 4.1 - 4.2 - 4.3

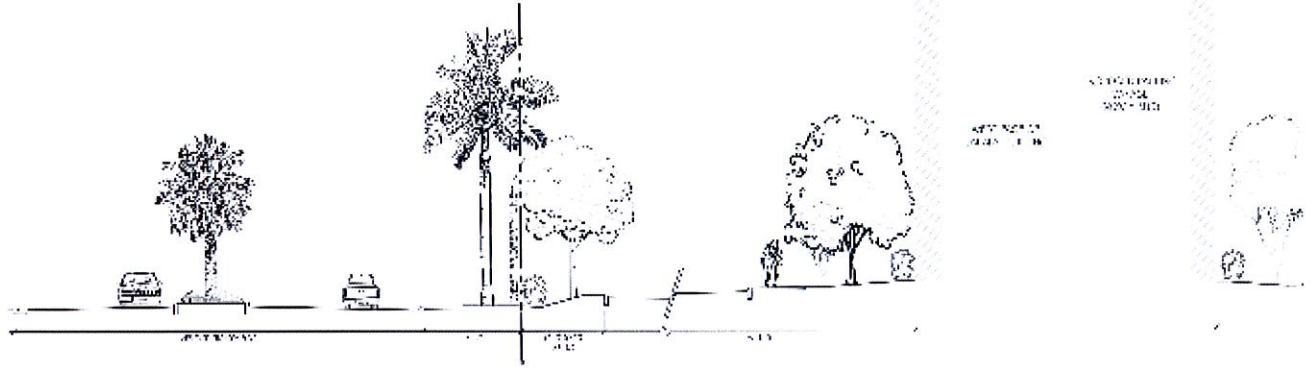
Dania Entertainment



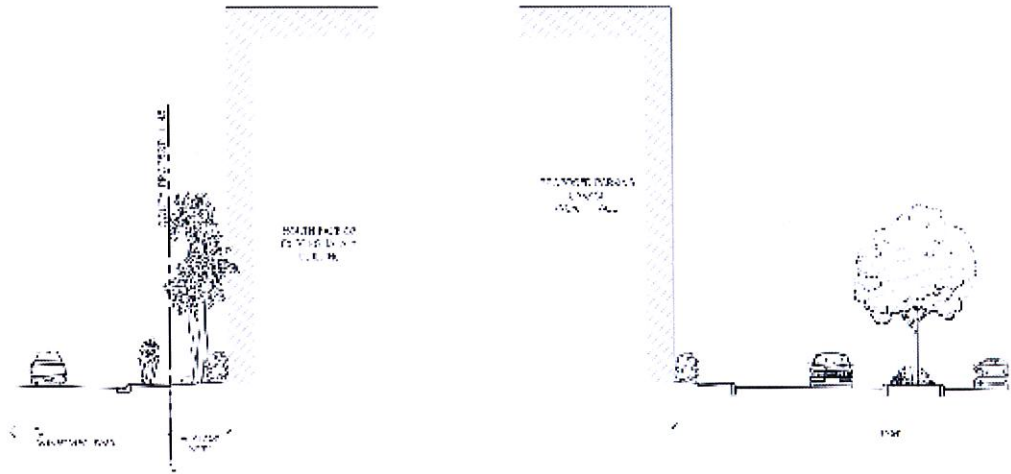
TECHNICAL SITE PLAN - PHASE 4.1 - 4.2 - 4.3

Dania Entertainmen

WEST BUFFER ALONG FRONTON BLVD. AND THE SOUTH BUFFER ALONG DANIA BEACH BLVD. SHALL INCORPORATE THE USE OF LARGE PALMS, ORNAMENTAL TREES AND CATEGORY 1 & 2 TREES IN ORDER TO BEAUTIFY THE ROADS & PROPERTY.

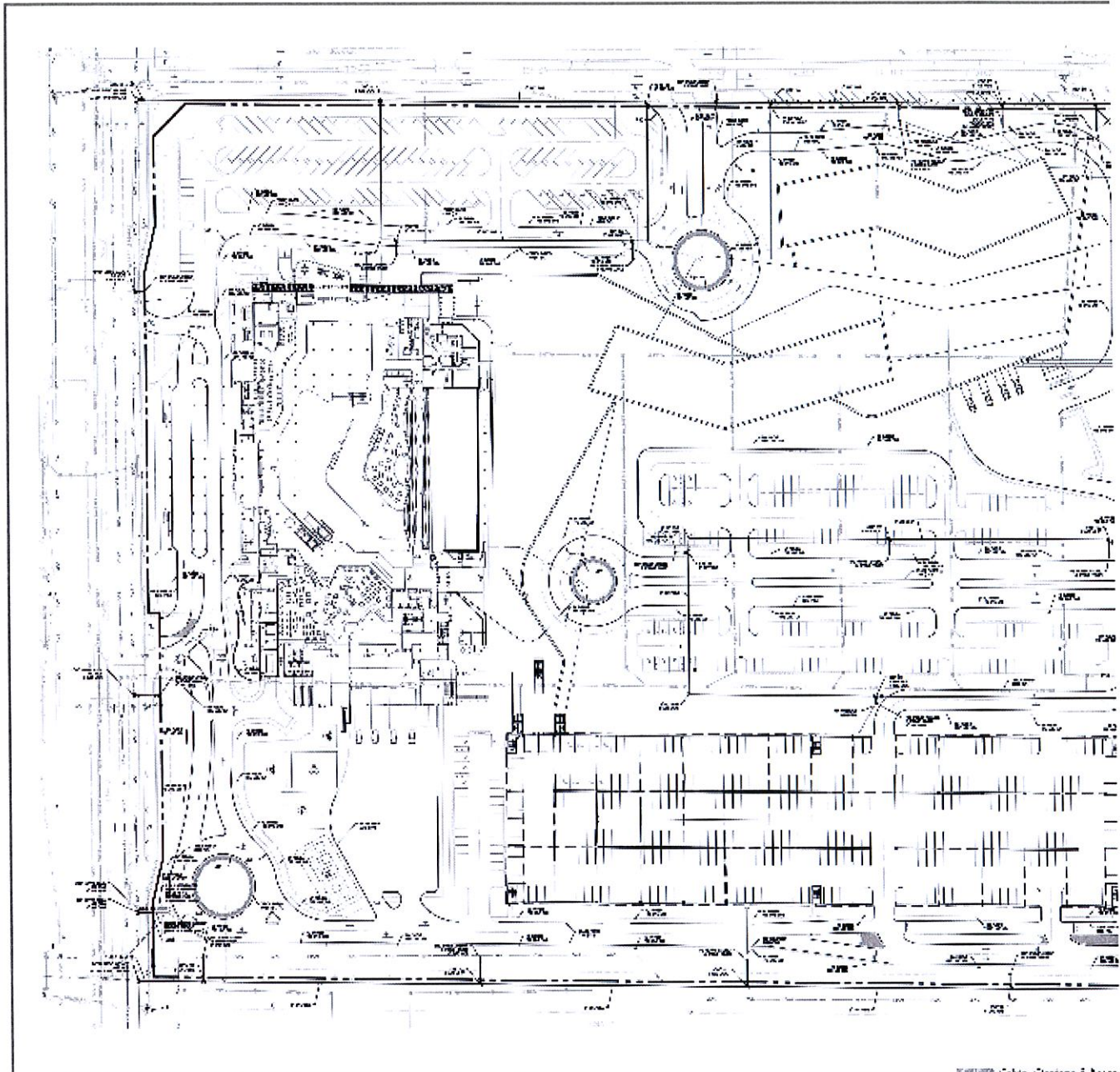


SECTION ALONG WEST BUFFER @ JAI ALAI BUILDING



SECTION ALONG SOUTH BUFFER @ EXISTING JAI ALAI BUILDING

TYPICAL BUFFER SECTIONS **Dania Entertainment Center, LLC** 



EXISTING WATER SERVICES AND
PRELIMINARY FIRE IMPROVEMENTS

Dania Entertainment Center, LLC

DATE: 02-13-14

